

(19) World Intellectual Property Organization
International Bureau



(43) International Publication Date
18 December 2008 (18.12.2008)

PCT

(10) International Publication Number
WO 2008/152070 A1

(51) International Patent Classification:
G01N 33/574 (2006.01) *C12Q 1/68* (2006.01)

[BE/BE]; Lijsterstraat 10, B-9860 Balegem (BE). **CON-TRERAS, Roland** [BE/BE]; Molenstraat 53, B-9820 Merelbeke (BE).

(21) International Application Number:
PCT/EP2008/057325

(74) Common Representative: **VIB VZW**; Rijvisschestraat 120, B-9052 Gent (BE).

(22) International Filing Date: 11 June 2008 (11.06.2008)

(25) Filing Language: English

(26) Publication Language: English

(30) Priority Data:
60/944,029 14 June 2007 (14.06.2007) US

(71) Applicants (for all designated States except US): **VIB VZW** [BE/BE]; Rijvisschestraat 120, B-9052 Gent (BE). **UNIVERSITEIT GENT** [BE/BE]; Sint-Pietersnieuw-straat 25, B-9000 Gent (BE).

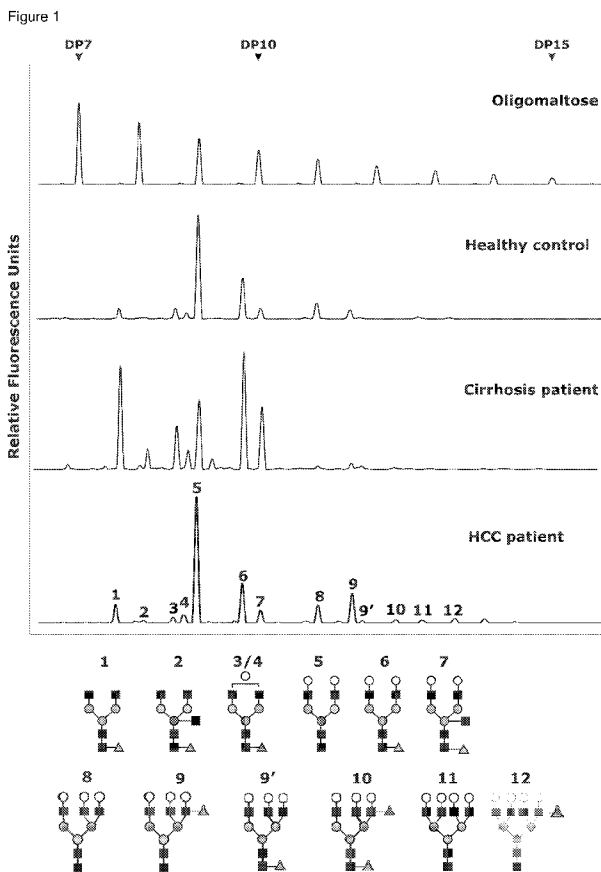
(81) Designated States (unless otherwise indicated, for every kind of national protection available): AE, AG, AL, AM, AO, AT, AU, AZ, BA, BB, BG, BH, BR, BW, BY, BZ, CA, CH, CN, CO, CR, CU, CZ, DE, DK, DM, DO, DZ, EC, EE, EG, ES, FI, GB, GD, GE, GH, GM, GT, HN, HR, HU, ID, IL, IN, IS, JP, KE, KG, KM, KN, KP, KR, KZ, LA, LC, LK, LR, LS, LT, LU, LY, MA, MD, ME, MG, MK, MN, MW, MX, MY, MZ, NA, NG, NI, NO, NZ, OM, PG, PH, PL, PT, RO, RS, RU, SC, SD, SE, SG, SK, SL, SM, SV, SY, TJ, TM, TN, TR, TT, TZ, UA, UG, US, UZ, VC, VN, ZA, ZM, ZW.

(72) Inventors; and
(75) Inventors/Applicants (for US only): **CHEN, Cuiying**

(84) Designated States (unless otherwise indicated, for every kind of regional protection available): ARIPO (BW, GH, GM, KE, LS, MW, MZ, NA, SD, SL, SZ, TZ, UG, ZM,

[Continued on next page]

(54) Title: DIAGNOSTIC TEST FOR THE DETECTION OF EARLY STAGE LIVER CANCER



(57) Abstract: The invention provides methods and kits to detect early stage hepatocellular carcinoma or a change in the gradation of hepatocellular carcinoma in mammals. The diagnostic marker is based on the profiling and identification of diagnostic carbohydrates present in a body fluid such as blood serum.

WO 2008/152070 A1